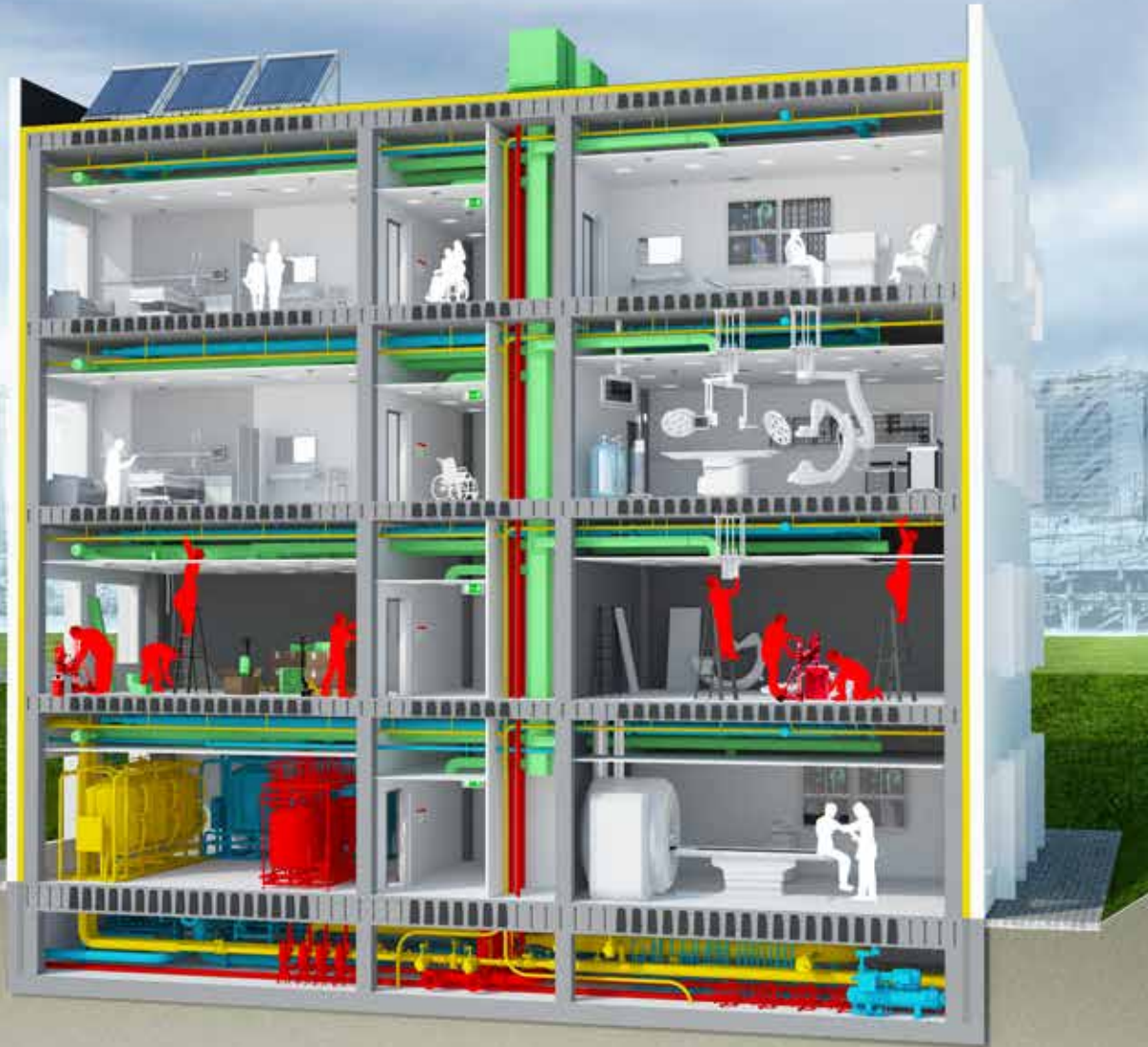


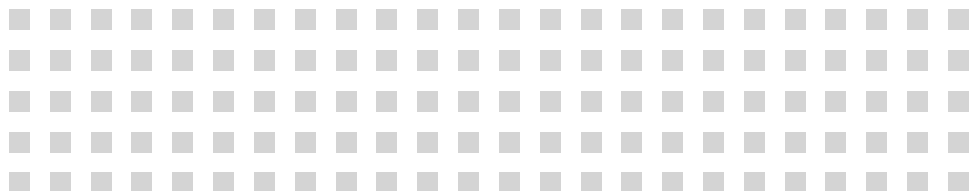
**AIRDECK®** *The right way  
to building structures*

Flexible building structures



*for hospitals*

[www.airdeck.com](http://www.airdeck.com)

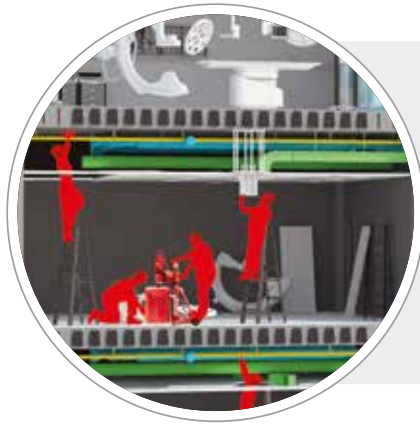


## Looking for lasting flexibility in your hospital? With Airdeck, you're choosing the right foundation.

Airdeck offers lightweight building structures in combination with large spans for open and flexible spaces. They can even be built without beams or supporting walls. This enables maximal spacing in the suspended ceilings for the integration of technical installations. Even future modifications - such as the reorganisation of spaces, the integration of new equipment or even completely new operating rooms - are easily managed

with Airdeck. The vertical transition of new technical installations through Airdeck's building structure is possible in close collaboration with your structural engineers.

Flexibility starts by choosing the right building structure. Meet Airdeck along with our vision on flexible and beamless construction.

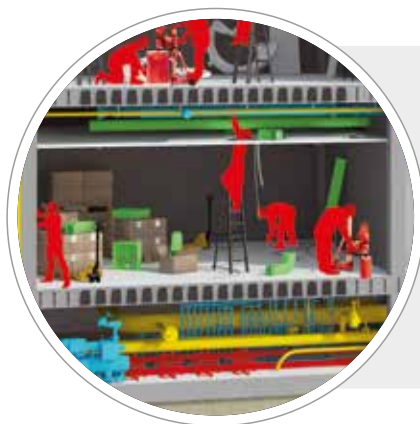
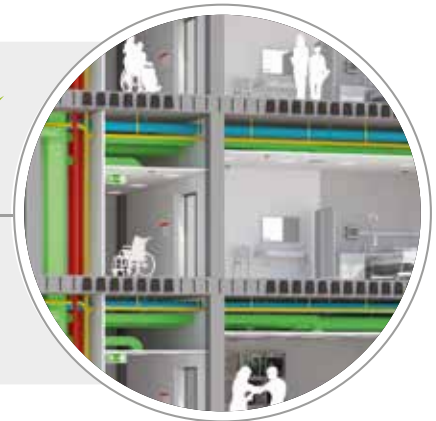


### PREFABRICATED FLAT FLOORS

- Fast and reliable prefabricated building system
- More space for technical installations

### EASY INSTALLATION OF TECHNICAL ITEMS

- All technical items can be integrated
- Horizontal and vertical



### DRILLING PROTOCOLS GUARANTEE FLEXIBILITY

- Remodelling of hospitals is possible
- Futureproof building structure



Airdeck is an open system for (beamless) building structures with the flexibility to remodel hospitals in the future. Using Airdeck optimizes the complete building structure and construction process.

# References

Airdeck has been used for the building structures of more than 150 buildings. Over 700.000 m<sup>2</sup> of references can be found, of which 500.000 m<sup>2</sup> are hospitals. We are present in Europe, the Middle-East, America, ...



© P&T Architects and Engineers

**Special Forces Medical City, Jeddah, KSA**  
SURFACE: 350.000 m<sup>2</sup> AIRDECK



© Robbrecht en Daem Architecten

**ZNA Hospital, Antwerp, Belgium**  
SURFACE: 100.000 m<sup>2</sup> AIRDECK



## Other flexible hospitals with Airdeck:

- Hospital Maas-Kempen (B) - 25.000 m<sup>2</sup>
- Hospital Ommelander (NL) - 27.500 m<sup>2</sup>
- University Maternity Hospital (B) - 30.000 m<sup>2</sup>
- Hospital Maas-Kempen (B) - 25.000 m<sup>2</sup>
- University Psychiatric Hospital (B) - 11.000 m<sup>2</sup>
- University Psychiatric Children's Hospital (B) - 5.500 m<sup>2</sup>

**AIRDECK IS  
COMPLIANT WITH BUILDING CODES**

✓ ACI ✓ SBC ✓ EC2 ✓ AS

**Guaranteed structural building concepts,  
using lightweight floors with less concrete and steel.**

# AIRDECK® *The right way to building structures*

## Meet the Airdeck Build Vision

Building hospitals should be fast, simple and good. At Airdeck we understand the complexity of the business.

With a lot of know-how, the right approach and our unique method of co-development, we contribute to delivering top-notch building structures with longlasting flexibility for future adaptations.

And that's our clear and sustainable way to make buildings have more circular value. By continuous improvement and innovation we always bring Airdeck to the next level.

We invite you to share our success in bringing the Airdeck solution to your market.



**Engineering & support for contractors and design teams.**



## AIRDECK®

**Airdeck Building Concepts nv**  
 Prins Bisschopssingel 36 bus 7  
 3500 Hasselt - BELGIUM  
**T** +32 11 37 48 00  
**F** +32 11 26 96 01  
 info@airdeckME.com  
[www.airdeckME.com](http://www.airdeckME.com)



**Jeroen Libbrecht**  
 Export & Partnership Manager  
 jeroen@airdeck.com  
**Mobile:** +32 470 850 325

